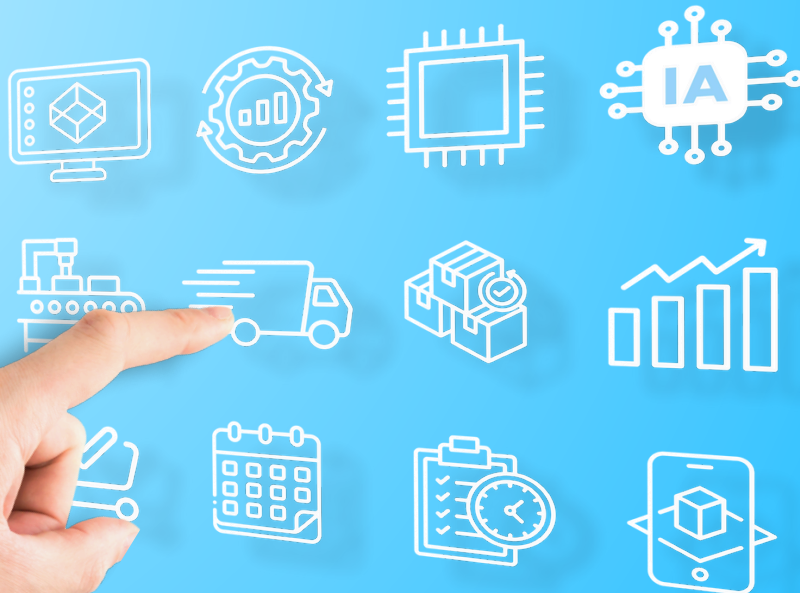




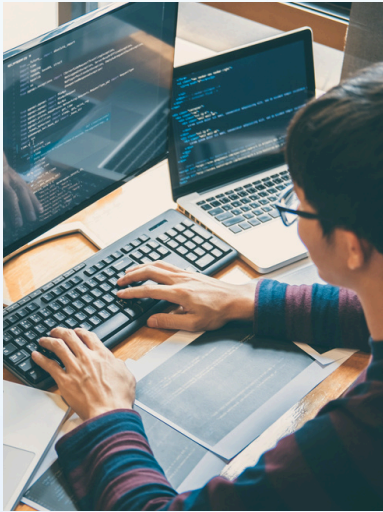
Steel / Manager



Our various features

MES software for **steel construction**
and **custom** IT solutions

www.steel-manager.be



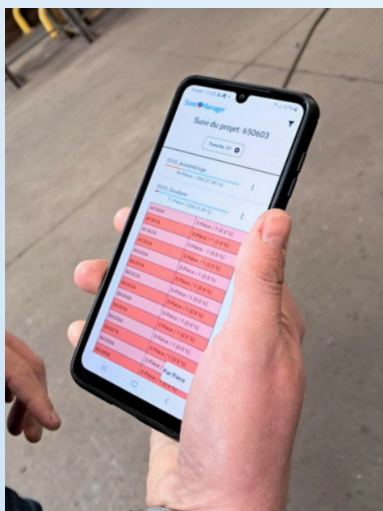
Custom developments tailored to your production

Steel Manager develops features based on the specific needs of each company to ensure smooth and efficient integration into existing production processes.



Quote support

Calculate your quotes accurately based on real data and production history. This approach ensures fairer offers that are perfectly aligned with manufacturing costs and lead times.



Mobile app for smartphones

Track production progress in real time from a mobile device and stay in control, wherever you are.



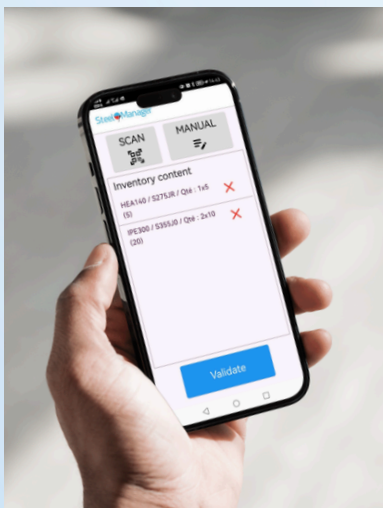
Theoretical production times using AI

Calculate theoretical production times using artificial intelligence algorithms that leverage the full set of production data.



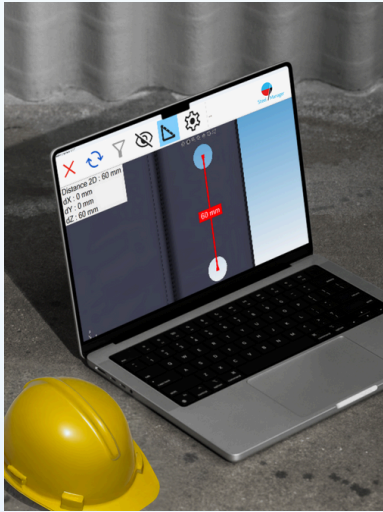
Production time adjustment

Reassign unreported production downtime to projects. This ensures that the time allocated to each project is consistent with the actual time worked.



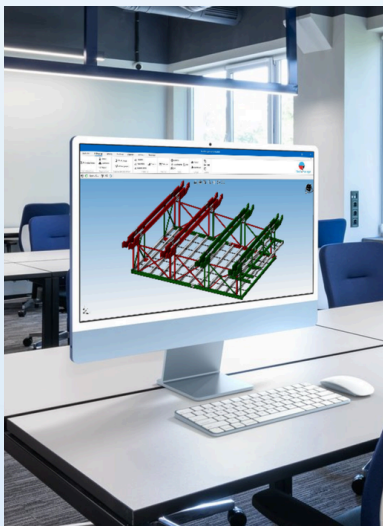
Inventory on smartphone

Perform your inventories from a mobile device. Scan barcodes and update quantities in real time for simplified, mobile-friendly management.



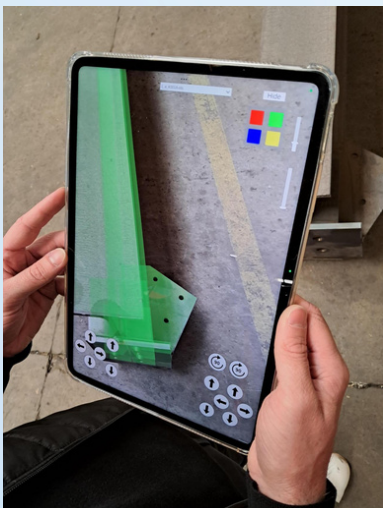
Measurement on 3D model

Visualize your assemblies in 3D on the shop floor and take precise measurements on the digital model. This facilitates dimension checks and preparation for operations.



Production tracking on 3D model

Track production progress with dynamic colorization of the 3D model, based on real-time production feedback. Each part changes color according to its status, providing a clear overview of the project.



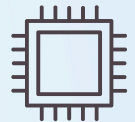
Quality control via augmented reality

Allows 3D models to be overlaid on physical parts, making it easy to check the conformity of manufactured components.



Plate and bar optimization

Offers the best cutting patterns to optimize the use of raw materials, with the ability to work across multiple projects.



Post-processor for CNC machines

Generates the necessary files for CNC machine operations, tailored to their specific characteristics.



Revision management

Enables simple and quick revisions based on production progress, ensuring flexible management of modifications and adjustments.



Traceability

Ensures complete traceability from the receipt of raw materials to delivery on-site, in compliance with quality requirements and industry standards.



Stock management

Real-time tracking of raw materials to prevent shortages and optimize material usage.



Temporary storage

Manages the produced parts temporarily stored in the workshop, tracking their location and quantity. This feature allows for quick localization of parts stored during production.



Purchasing

Manages purchase requests, orders, and receipts, in line with actual production needs and inventory levels.



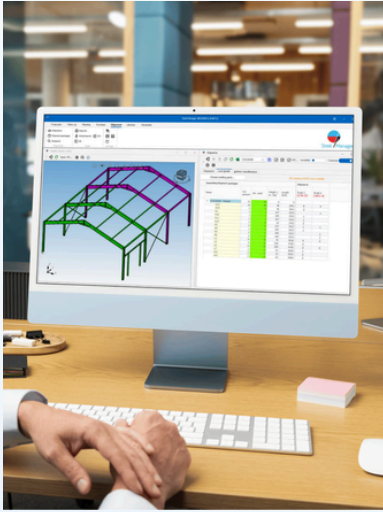
Planning and ERP Integration

Organize activities, human resources, and machines, considering priorities, deadlines, and production capacities. Connect Steel Manager to your ERP system to synchronize production data and ensure consistency between operations and financial management.



Profitability analysis

Compare estimated costs (materials, labor, machine time) to actual costs for each project. This allows for identifying discrepancies, optimizing margins, and improving financial management of production.



Shipping

Prepare, track, and manage your shipments from the 3D model with precision, ensuring complete traceability of orders until customer receipt.



Time and activity management

Records operators' working hours and machine usage. Provides a clear view of performance, allowing for the identification of areas for improvement and optimization of productivity.



Welding management

Identifies and tracks each weld to be performed on parts or assemblies. Allows for monitoring execution and ensuring traceability and quality in compliance with current standards (EN1090).
